



Comfort **By Design**

PRODUCT CATALOG

Spring 2024



RHEIA AIR DISTRIBUTION TECHNOLOGY

Rheia is an innovative, engineered HVAC air distribution system providing a more comfortable home, that is efficient, cost-effective, and future code compliant.

Table of Contents

SKU List	4
Compliance Summary	4
SKU Shipping Information	5
3" Ferrule	6
4" Ferrule	7
45-Degree Elbow Extension	8
Coupler	9
Ductboard Take Offs	10
High Sidewall Boot 4x10 Assembly	11
Pass Through Boot Assembly	12
Ceiling Boot Assembly	13
Floor Boot Assembly	14
Ceiling Diffuser	15
Ceiling Diffuser Small	16
Slotted Diffuser V2	17
Metal Floor Diffuser 4x10	18
Hanger Bar Assembly	19



SKU List



Compliance Summary

Rheia connector and distribution parts are manufactured from a UL-94 V-0 listed engineering thermoplastic.

The 3" and 4" Ferrule, Coupler, and Elbow are listed to UL2043. The 3" Ferrule, Coupler, and Elbow are listed to UL181C.

Rheia's wall and ceiling diffusers are UL94 HB rated, manufactured with a UV stabilized engineering thermoplastic.

The Rheia duct is uninsulated and manufactured with a highly-durable fiberglass fabric core. All Rheia ducts are UL181-listed Class 1 Air Ducts. Note: 3" and 4" r-8 insulated duct are also available.

Use Rheia-approved duct ONLY.

Use Rheia-approved floor diffusers ONLY. Use of non-approved diffusers will affect system performance and void the warranty.

For more information

www.rheiacomfort.com/contact

Rheia, LLC
4636 S 35th Street, Suite 2
Phoenix, AZ 85040



Part Number	Part/ Assembly Name
10-01-010	3" Ferrule
20-01-010	4" Ferrule
10-01-020	45 Degree Elbow Extension
10-01-030	Coupler
10-01-041	Duct Board Take Off Inside Extended
10-01-051	Duct Board Take Off Outside Extended
10-01-200	High Sidewall Boot Assembly
10-01-210	Pass Through Boot Assembly
10-01-220	Ceiling Boot Assembly
10-01-280	Floor Boot Assembly
10-01-310	Two-Duct Floor Boot Assembly
10-04-091	Slotted Diffuser
10-04-230	Ceiling Diffuser Assembly
10-04-260	Ceiling Diffuser Small Assembly
10-00-190	3" Duct Uninsulated ST-L (50FT lengths)
10-00-220	3" Duct Insulated R8 ST-L Core (25FT lengths)
20-00-190	4" Duct Uninsulated ST-L (50FT lengths)
20-00-220	4" Duct Insulated R8 ST-L Core (25FT lengths)
00-00-240	Hanger Bar Assembly
00-04-300	Floor Diffuser 4x10 White
00-05-300	Floor Diffuser 4x10 Beige
00-06-300	Floor Diffuser 4x10 Grey

SKU Shipping Information

Part No.	Part/ Assembly Name	Weight	Length	Width	Height	Pallet Type	Qty	Piece Qty	Case Qty	Weight*	Piece Qty
10-00-190	3" X 50' STL NON-INSULATED	28.0	16.00"	16.00"	20.00"	SINGLE STACK	6	7,200	24	672.0	172,800
10-00-220	3" X 25' EVERCLEAN R8.0 INSULATED	12.5	11.75"	11.75"	30.00"	SINGLE STACK	1	900	36	450.0	21,600
20-00-190	4" X 50' STL NON-INSULATED	25.0	10.50"	22.00"	22.00"	SINGLE STACK	6	7,200	24	600.0	172,800
20-00-220	4" x 25' EVERCLEAN R8.0 INSULATED	13.0	11.75"	11.75"	30.00"	SINGLE STACK	1	900	36	468.0	21,600
00-00-240	HANGER BAR ASSEMBLY	36.5	15.75"	10.75"	10.50"	DOUBLE STACK	100	7,000	70	2,555.0	84,000
00-04-300	METAL FLOOR DIFFUSER (WHITE)	15.5	16.00"	12.00"	13.00"	SINGLE STACK	20	1,400	70	1,125.0	
00-05-300	METAL FLOOR DIFFUSER (BEIGE)	15.5	16.00"	12.00"	13.00"	SINGLE STACK	20	1,400	70	1,125.0	
00-06-300	METAL FLOOR DIFFUSER (GRAY)	15.5	16.00"	12.00"	13.00"	SINGLE STACK	20	1,400	70	1,125.0	
10-01-010	FERRULE - 3"	13.0	20.00"	12.00"	17.00"	SINGLE STACK	80	2,240	28	364.0	
10-01-020	45 DEGREE ELBOW EXTENSION - 3"	13.0	20.00"	12.00"	17.00"	SINGLE STACK	90	2,520	28	364.0	
10-01-030	COUPLER - 3"	15.0	20.00"	12.00"	17.00"	SINGLE STACK	160	4,480	28	420.0	
10-01-040	DUCT BOARD TAKE OFF - INSIDE	7.5	12.00"	12.00"	17.00"	SINGLE STACK	155	4,340	28	210.0	
10-01-041	TAKE OFF - INSIDE (DUCTBOARD)	9.0	12.00"	12.00"	17.00"	SINGLE STACK	132	3,696	28	252.0	
10-01-050	DUCT BOARD TAKE OFF - OUTSIDE	12.0	20.00"	12.00"	17.00"	SINGLE STACK	155	4,340	28	336.0	
10-01-051	TAKE OFF - OUTSIDE (DUCTBOARD)	13.0	20.00"	12.00"	17.00"	SINGLE STACK	132	3,696	28	364.0	
10-01-200	HIGH SIDEWALL ASSEMBLY	30.0	24.00"	20.00"	19.00"	SINGLE STACK	50	600	12	360.0	
10-01-210	PASS THROUGH BOOT ASSEMBLY	30.0	24.00"	20.00"	19.00"	SINGLE STACK	48	576	12	360.0	
10-01-220	CEILING BOOT ASSEMBLY	19.0	20.00"	12.00"	17.00"	SINGLE STACK	90	2,520	28	532.0	
10-01-250	FLOOR BOOT 4X10	19.0	22.50"	12.50"	20.00"	SINGLE STACK	40	960	24	456.0	20,160
10-01-280	FLOOR BOOT 4X10 ASSEMBLY	19.5	22.50"	12.50"	20.00"	SINGLE STACK	40	960	24	468.0	20,160
10-04-090	SLOTTED DIFFUSER	8.0	19.00"	11.00"	9.50"	SINGLE STACK	60	1,920	32	256.0	
10-04-091	SLOTTED DIFFUSER v2	14.0	20.00"	18.50"	6.00"	SINGLE STACK	80	2,560	32	448.0	
10-04-230	CEILING DIFFUSER ASSEMBLY	16.0	20.00"	12.00"	17.00"	SINGLE STACK	64	1,792	28	448.0	
10-04-260	CEILING DIFFUSER SMALL ASSY	14.0	18.00"	14.00"	14.50"	SINGLE STACK	90	2,520	28	392.0	
20-01-010	FERRULE 4" (75/76 Qty)	16.0	20.00"	12.00"	17.00"	SINGLE STACK	75	2,100	28	448.0	
20-01-010	FERRULE 4" (80 Qty)	17.0	20.00"	12.00"	17.00"	SINGLE STACK	80	2,240	28	476.0	
20-01-010	FERRULE 4" (80 QTY) V2	18.0	20.00"	18.00"	17.00"	SINGLE STACK	80	1,280	16	288.0	

* PALLET APPROX WEIGHT: 40LB. PALLET SIZE: 40X48



3" Ferrule

Part #: 10-01-010

The 3" Ferrule connects to 3" duct to other components of the Rheia system. The component is designed to be interchangeable and connect with other components. 3" Ferrule to duct connections create a seal to the duct which is sufficiently air tight to not require additional sealing with tape or mastic.

3-inch Ferrule: 10-01-010



3" Ferrule

SPECIFICATIONS

Rheia Ferrule's are part of the Rheia snap-fit system used to connect and seal all components together, which is sufficiently air tight to not require additional sealing with tape or mastic. A fully assembled system complies with air leakage industry standards when installed correctly.

Intended Use

For use with 3" Thermaflex S-TL duct. The threaded Ferrule connects the duct to other components of the Rheia system.

Material

Flame retardant Polycarbonate / ABS blend.
Color: Black.
100% recyclable.

Installation

Follow Rheia's Installation Guidelines for detailed installation procedures and practices.

Listings

UL 181C: Outline of Investigation for Non-Metal Joining Accessories for Flexible Air Ducts and Air Connectors (MH64419)

UL2043: Standard for Fire Test for Heat and Visible Smoke Release for Discrete Products and Their Accessories Installed in Air-Handling Spaces

Manufactured with UL94 V-0 rated engineering thermoplastic.

Warranty

2-year limited warranty.
For warranty information go to www.rheiacomfort.com/contact.

DIMENSIONS

Part Dimensions:

Part #: 10-01-010

Diameter: 3.4" (87.0mm), Height: 3.2" (80.0 mm)

Part Weight: 0.14 lbs.



4" Ferrule

Part #: 20-01-010

The 4" Ferrule connects duct to other components of the Rheia system. Each component is designed to be interchangeable and connect with other components. 4" Ferrule to duct connections create a seal to the duct which is sufficiently air tight to not require additional sealing with tape or mastic.

4-inch Ferrule: 20-01-010



4" Ferrule

SPECIFICATIONS

Rheia Ferrule's are part of the Rheia snap-fit system used to connect and seal all components together, which is sufficiently air tight to not require additional sealing with tape or mastic. A fully assembled system complies with air leakage industry standards when installed correctly.

Intended Use

For use with 4" Thermaflex S-TL duct. The threaded Ferrule connects the duct to other components of the Rheia system.

Material

Flame retardant Polycarbonate / ABS blend.
Color: Black.
100% recyclable.

Installation

Follow Rheia's Installation Guidelines for detailed installation procedures and practices.

Listings

UL2043: Standard for Fire Test for Heat and Visible Smoke Release for Discrete Products and Their Accessories Installed in Air-Handling Spaces

Manufactured with UL94 V-0 rated engineering thermoplastic.

Warranty

2-year limited warranty.
For warranty information go to www.rheiacomfort.com/contact.

DIMENSIONS

Part Dimensions:

Part #: 20-01-011
Diameter: 4.3" (109.2 mm), Height: 2.7" (68.5 mm)

Part Weight: 0.19 lbs.



45-Degree Elbow Extension

Part #: 10-01-020

The 45-Degree Elbow Extension is used when a duct is required to make a tight bend, in which case one or two elbows will prevent compromised air flow in the duct. The elbow is designed to connect with other components. To ensure acceptable airflow, two elbows are used to make a 90 degree duct transition, when the inside radius of the duct transition is less than the diameter of the duct.



45-Degree Elbow Extension

SPECIFICATIONS

Elbows are part of the Rheia snap-fit system used to connect and seal all components together, which is sufficiently air tight to not require additional sealing with tape or mastic. A fully assembled system complies with air leakage industry standards when installed correctly.

Intended Use

For use with 3" or 4" duct. The 45-Degree Elbow Extension connects duct and components in various corner transitions. Building code requires the use of an elbow fitting when the inside radius of a duct is less than the diameter of the duct.

Material

Flame retardant Polycarbonate / ABS blend.
Color: Black.
100% recyclable.

Installation

Follow Rheia's Installation Guidelines for detailed installation procedures and practices.

Listings

UL 181C: Outline of Investigation for Non-Metal Joining Accessories for Flexible Air Ducts and Air Connectors (MH64419)

UL2043: Standard for Fire Test for Heat and Visible Smoke Release for Discrete Products and Their Accessories Installed in Air-Handling Spaces (

Manufactured with UL94 V-0 rated engineering thermoplastic.

Warranty

2-year limited warranty.
For warranty information go to www.rheiacomfort.com/contact.

DIMENSIONS

Part Dimensions:

Part #: 10-10-020
Length: 4.1" (102.8 mm), Width: 3.1(79.5mm), Height: 3.8" (95.4 mm)

Part Weight: 0.13 lbs.



Coupler

Part #: 10-01-030

The Coupler component is utilized when a duct run is extended or makes a tight bend, in which case a Coupler connects with Ferrules and/or elbows to complete the required assembly.

SPECIFICATIONS

Couplers are part of the Rheia snap-fit system used to connect and seal components together, which is sufficiently air tight to not require additional sealing with tape or mastic. A fully assembled system complies with air leakage industry standards when installed correctly.

Intended Use

For use with 3" or 4" duct. The Coupler connects duct to other components of the Rheia system.

Material

Flame retardant Polycarbonate / ABS blend.

Color: Black

100% recyclable.

Installation

Follow Rheia's Installation Guidelines for detailed installation procedures and practices.

Listings

UL 181C: Outline of Investigation for Non-Metal Joining Accessories for Flexible Air Ducts and Air Connectors (MH64419)

UL2043: Standard for Fire Test for Heat and Visible Smoke Release for Discrete Products and Their Accessories Installed in Air-Handling Spaces

Manufactured with UL94 V-0 rated engineering thermoplastic.

Warranty

2-year limited warranty.

For warranty information go to www.rheiacomfort.com/contact.



Coupler

DIMENSIONS

Part Dimensions:

Part #: 10-10-030

Diameter: 3.5" (88.0 mm, Height: 1.9" (48.4 mm)

Part Weight: 0.08 lbs.



Ductboard Take Offs

Part #s: 10-01-041 and 10-01-051

Two-part system designed for use with UL181-listed ductboard material.

Duct Board Take Off Inside Extended: 10-01-041

Duct Board Take Off Outside Extended: 10-01-051

SPECIFICATIONS

Available in one size, able to connect with 3" Ferrule (10-01-010), 4" Ferrule (20-01-010), or 45 Degree Elbow Extension (10-01-020).

Intended Use

Required for use with 1" or 1 1/2" ductboard manifold built to NAIMA's (North American Insulated Manufacturer's Association) Fibrous Glass Duct Construction Standards. The two-part system snap fits together creating a seal with the duct board. Additional sealing with tape or mastic is not required or recommended.

Ductboard Take Off Outside Extended (10-01-051) can be used with a sheet metal manifold. The part must be secured with four sheet metal screws and must be sealed to the manifold using a high performance silicone caulk.

Material

Flame retardant Polycarbonate / ABS blend.

Color: Black.

100% recyclable.

Installation

Follow Rheia's Installation Guidelines for detailed installation procedures and practices.

Listings

Manufactured with UL94 V-0 rated engineering thermoplastic.

Warranty

2-year limited warranty.

For warranty information go to www.rheiacomfort.com/contact.



Ductboard Take Off Inside Extended and Outside Extended

DIMENSIONS

Part Dimensions:

Part #: 10-01-041

Diameter: 4.3" (109.3 mm), Height: 1.5" (38.0 mm)

Part Weight: 0.06 lbs.

Part Dimensions:

Part #: 10-01-051

Diameter: 4.4" (107.3 mm), Height: 2.1" (53.7 mm)

Part Weight: 0.09 lbs.



High Sidewall Boot 4x10 Assembly

Assembly Part # 10-01-200

For new construction wall installations only. Attaches to framing using the Rheia Hanger Bar Assembly (00-00-240), or via support blocking. Includes an adjustable damper blade. Must be used with Rheia-approved Slotted Wall Diffusers (10-04-090 or 10-04-091).

SPECIFICATIONS

For installation in 2x4 or larger wall framing or steel stud framing.

Intened Use

Stud spacing: Max. 24" o.c. Min. 16" o.c. (when using Hanger Bar)
For optimum performance locate the center of the boot between 4 1/2" and 10" from the upper edge of the wall top plate.

Material

High Sidewall Boot: Flame-retardant Polycarbonate /ABS blend.
Damper Blade: Flame-retardant Polycarbonate /ABS blend.
Damper Strap: Polypropylene.
100% recyclable.

Installation

Follow Rheia's Installation Guidelines for detailed installation procedures and practices.
When using the Rheia Hanger Bar, once the boot is correctly positioned, fasten the boot to the Hanger Bar using a sheet metal screw with a minimum length of 3/8".
When mounting the High Sidewall boot directly to framing, use two pan-head wood screws with a minimum length of 5/8".

Listings

Manufactured with UL94 V-0 rated engineering thermoplastic.

Warranty

2-year limited warranty.
For warranty information go to www.rheiacomfort.com/contact.

DIMENSIONS

Assembly Dimensions (with damper closed)
Length 6.2" (157.5 mm), Width 8.9" (225.3 mm),
Height 7.2" (182.2 mm)

Assembly Weight: 0.47 lbs.



Pass Through Boot Assembly with Damper

PERFORMANCE DATA

Performance based on boot and diffuser assemblies together. Components include:

1. High Sidewall Boot Assembly - Rheia Part Number 10-01-200
2. Slotted Diffuser - Rheia Part Number 10-04-090
3. 3" Ferrule - Rheia Part Number 10-01-010

Table 1:
High Sidewall Boot with Slotted Diffuser Performance Data

Neck size 3" Dia.	Neck velocity (fpm)	407	611	815	1018
	Pressure drop (IWC)	0.012	0.026	0.044	0.067
Diffuser size 8"x1-1/2"	Airflow (CFM)	20	30	40	50
	Vertical throw (feet)	3	5	5	9
	Horizontal spread (feet)	1	2	4	4

Performance Data Notes:

1. Throw data is given in feet to terminal velocities of: 150 fpm (first shown) 100 fpm (middle shown) and 50 fpm (last shown).
2. Pressure drops given for the boot and diffuser assembly only without a damper installed. For additional pressure drops with the damper installed see Table 2.

Table 2:
Damper position pressure drop

Damper blade pressure drop (IWC)	Airflow (CFM)	Damper Position				
		1 (Open)	2	3	4 5 (Closed)	
20		0.006	0.028	0.078	0.232	0.443
30		0.013	0.061	0.168	0.501	0.957
40		0.023	0.106	0.290	0.865	1.653
50		0.035	0.162	0.444	1.322	2.525



Pass Through Boot Assembly

Assembly Part # 10-01-210

For new construction wall installations only. Attaches to framing using the Rheia Hanger Bar Assembly (00-00-240), or via support blocking. Includes an adjustable damper blade. Must be used with Rheia-approved Slotted Wall Diffusers (10-04-090 or 10-04-091).



Pass Through Boot Assembly with Damper

SPECIFICATIONS

Intended Use

For installation into 2x4 or larger wall framing or steel stud framing. Stud spacing: Max. 24" o.c. Min. 16" o.c. (when using Hanger Bar). For optimum performance locate the center of the boot between 4 1/2" and 10" from the upper edge of the wall top plate.

Material

High Sidewall Boot: Flame-retardant Polycarbonate /ABS blend.
Damper Blade: Flame-retardant Polycarbonate /ABS blend.
100% recyclable.

Installation

Follow Rheia's Installation Guidelines for detailed installation procedures and practices.
When using the Rheia Hanger Bar, once the boot is correctly positioned, fasten the boot to the Hanger Bar using a sheet metal screw with a minimum length of 3/8".
When mounting the Pass Through Boot directly to framing, use two pan-head wood screws with a minimum length of 5/8".

Listings

Manufactured with UL94 V-0 rated engineering thermoplastic.

Warranty

2-year limited warranty.
For warranty information go to www.rheiacomfort.com/contact.

DIMENSIONS

Assembly Dimensions (with damper closed)
Length 6.2" (157.5 mm), Width 9.1" (230 mm),
Height 4.7" (120.5 mm)

Assembly Weight: 0.47 lbs.

PERFORMANCE DATA

Performance based on boot and diffuser assemblies together. Components include:

1. Floor Boot 4x10 Assembly - Rheia Part Number 10-01-280
2. Metal Floor Diffuser 4x10 - Rheia Part Number 00-04-300
3. Elbow Extension - Rheia Part Number 10-01-020
4. 3" Ferrule - Rheia Part Number 10-01-010

Table 1:
Pass Through Boot with Slotted Diffuser Performance Data

Neck size 3" Dia.	Neck velocity (fpm)	407	611	815	1018
	Pressure drop (IWC)	0.004	0.008	0.014	0.023
Diffuser size 4"x10"	Airflow (CFM)	20	30	40	50
	Vertical throw (feet)	4-6-7	5-7-12	7-11-15	9-12-17

Performance Data Notes:

1. Throw is given in feet to terminal velocities of: 150 fpm (first) 100 fpm (middle) and 50 fpm (last).
2. Pressure drops given for the boot and diffuser assembly only without a damper installed. For additional pressure drops with the damper installed see Table 2.

Table 2:
Damper position pressure drop

Damper blade pressure drop (IWC)	Airflow (CFM)	Damper Position				
		1 (Open)	2	3	4	5 (Closed)
20		0.006	0.028	0.078	0.232	0.443
30		0.013	0.061	0.168	0.501	0.957
40		0.023	0.106	0.290	0.865	1.653
50		0.035	0.162	0.444	1.322	2.525



Ceiling Boot Assembly

Assembly Part # 10-01-210

Attaches to framing using two Rheia Hanger Bar Assemblies (00-00-240), or via support blocking. Includes an adjustable damper blade. Must be used with Rheia-approved Ceiling Diffusers (10-04-230 or 10-04-260).

SPECIFICATIONS

Intended Use

For new construction ceiling installations only. For installation into I-joist, open web, and dimensional framing. Joist spacing: Max. 24" o.c. Min. 16" o.c. (when using Hanger Bars).

Material

Ceiling Boot: Flame-retardant Polycarbonate /ABS blend.
Damper Blade: Flame-retardant Polycarbonate /ABS blend.
100% recyclable.

Installation

Follow Rheia's Installation Guidelines for detailed installation procedures and practices.
When using the Rheia Hanger Bar, once the boot is correctly positioned, fasten the boot to a Hanger Bar using a sheet metal screw with a minimum length of 3/8".
When mounting the Ceiling Boot directly to framing, use pan-head wood screws with a minimum length of 5/8".

Listings

Manufactured with UL94 V-0 rated engineering thermoplastic.

Warranty

2-year limited warranty.
For warranty information go to www.rheiacomfort.com/contact.

DIMENSIONS

Assembly Dimensions (with damper closed)
Length 5.9" (148.8 mm), Width 1.8" (46.2 mm),
Height 6.9" (174.4 mm)

Assembly Weight: 0.19 lbs.



Ceiling Boot Assembly with Damper Assembly

PERFORMANCE DATA

Performance based on boot and diffuser assemblies together. Components include:

1. Ceiling Boot Assembly- Rheia Part Number 10-01-220
2. Ceiling Diffuser Assembly - Rheia Part Number 10-04-230 and Ceiling Diffuser Small Assembly - Rheia Part Number 10-04-260
3. Elbow Extension - Rheia Part Number 10-01-020
4. 3" Ferrule - Rheia Part Number 10-01-010

Table 1: Ceiling Boot with Ceiling Diffuser performance data

	Neck velocity (fpm)	407	611	815	1018
Neck size 3" Dia.	Pressure drop (IWC)	0.010	0.023	0.039	0.060
	Airflow (CFM)	20	30	40	50
	360 deg. throw (feet)	0-1-3	1-2-4	2-3-4	2-3-5

Table 2: Ceiling Boot with Ceiling Diffuser Small performance data

	Neck velocity (fpm)	407	611	815	1018
Neck size 3" Dia.	Pressure drop (IWC)	0.010	0.023	0.039	0.060
	Airflow (CFM)	20	30	40	50
	Vertical throw (feet)	3	5	7	9
	Horizontal spread (feet)	1	2	2	3

Performance Data Notes:

1. Throw and spread is given in feet to terminal velocities of: 150 fpm (first) 100 fpm (middle) and 50 fpm (last).
2. Spread is the maximum width of the total air stream at the point of terminal velocity.
3. Pressure drops given for the boot and diffuser assembly only without a damper installed. For additional pressure drops with the damper installed see Table 2.

Table 3: Damper position pressure drop

Damper blade pressure drop (IWC)	Airflow (CFM)	Damper Position				
		1 (Open)	2	3	4	5 (Closed)
	20	0.006	0.028	0.078	0.232	0.443
	30	0.013	0.061	0.168	0.501	0.957
	40	0.023	0.106	0.290	0.865	1.653
	50	0.035	0.162	0.444	1.322	2.525



Floor Boot Assembly

Assembly Part # 10-01-280

For new construction floor installations only.
Attaches directly to the floor surface. Includes an adjustable damper blade.

SPECIFICATIONS

Must be used with Rheia-approved Floor 4x10 Diffusers that are not equipped with a balancing damper.

Intended Use

For installation into open web truss or I-joist floor systems. Floor boots complement the Rheia design providing a solution in applications where the Rheia supply duct cannot be run to a high-sidewall or pass-through boot.

Material

Floor Boot: Flame-retardant Polycarbonate /ABS blend.
Damper Blade: Flame-retardant Polycarbonate /ABS blend.
100% recyclable.

Installation

Follow Rheia's Installation Guidelines for detailed installation procedures and practices. Fasten the boot to the sub-floor with a minimum of four pan-head wood screws with a minimum length of 5/8". Follow recommendations for flush to sub floor installation. Only use the following approved floor diffuser. Failure to do so will affect the system's airflow performance.

Approved floor diffusers are:

Part #00-04-300. Color: White RAL9016

Part #00-04-300. Color: Beige Pantone 7531C

Part #00-04-300. Color: Grey: Pantone Cool Gray 6C

Sub-Floor Cut Out Guidelines

Sub-floor cut out maximum: 4 5/8" x 10 5/8" +/- 1/8"

Sub-floor cut out minimum: 4 3/8" x 10 3/8" +/- 1/8"

Listings

Manufactured with UL94 V-0 rated engineering thermoplastic.

Warranty

2-year limited warranty.

For warranty information go to www.rheiacomfort.com/contact.

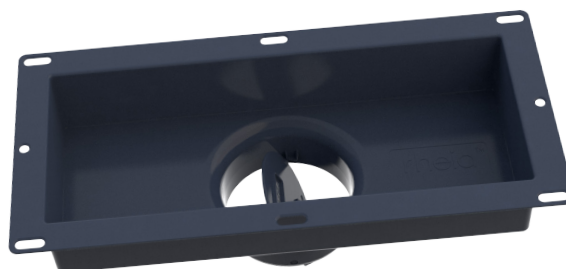
DIMENSIONS

Assembly Dimensions (with damper closed)

Length 11.6" (293.4 mm), Width 5.6" (141.0 mm),

Height 3.1" (79.5 mm).

Part Weight: 0.46 lbs.



Floor Boot Assembly with Damper

PERFORMANCE DATA

Performance based on boot and diffuser assemblies together. Components include:

1. Floor Boot 4x10 Assembly - Rheia Part Number 10-01-280
2. Metal Floor Diffuser 4x10 - Rheia Part Number 00-04-300
3. Elbow Extension - Rheia Part Number 10-01-020
4. 3" Ferrule - Rheia Part Number 10-01-010

Table 1:
Floor Boot with Metal Floor Diffuser Performance Data

Neck size 3" Dia.	Neck velocity (fpm)	407	611	815	1018
	Pressure drop (IWC)	0.012	0.026	0.044	0.067
Diffuser size 4"x10"	Airflow (CFM)	20	30	40	50
	Vertical throw (feet)	3	5	5	9
	Horizontal spread (feet)	1	2	4	4

Performance Data Notes:

1. Throw and spread is given in feet to terminal velocity of 50 fpm.
2. Spread is the maximum width of the total air stream at the point of terminal velocity.
3. Pressure drops given for the boot and diffuser assembly only without a damper installed. For additional pressure drops with the damper installed see Table 2.

Table 2:
Damper position pressure drop

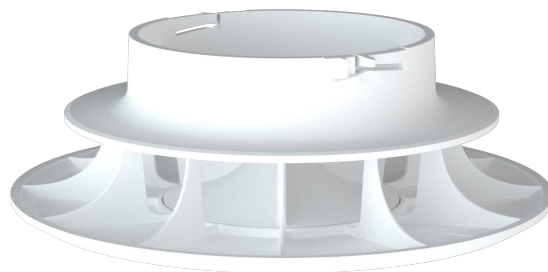
Damper blade pressure drop (IWC)	Airflow (CFM)	Damper Position				
		1 (Open)	2	3	4	5 (Closed)
20		0.006	0.028	0.078	0.232	0.443
30		0.013	0.061	0.168	0.501	0.957
40		0.023	0.106	0.290	0.865	1.653
50		0.035	0.162	0.444	1.322	2.525



Ceiling Diffuser

Assembly Part #: 10-04-230

Installed to Rheia Ceiling Boot Assembly #10-01-160.
No integrated airflow adjustment. Airflow balance is integrated into the Ceiling Boot Assembly: 10-01-220.
Use with a ceiling drywall thickness range of: 1/2" to 5/8"



Ceiling Diffuser

SPECIFICATIONS

Ceiling diffusers are available in 3" and 6" diameters.
Ceiling Diffuser: 6-inch diameter: **10-04-230**.

Intended Use

For installation in ceilings or similar applications. The diffuser mounts to the Rheia Ceiling Boot Assembly (10-01-220) with a bayonet-style attachment, and can be easily removed for service or cleaning. The diffusers are dishwasher safe. When installed the diffusers are not required to be caulk sealed to the drywall.

6-inch diffuser for use in cooling dominated climates.

HVAC designer to use their discretion when specifying the diffuser size accounting for home type, size, configuration and applicable climate zone into account.

HVAC designer to use their discretion when specifying the diffuser location taking into account the required room airflow, throw, and interior framing and mechanical layout limitations.

Material

UV-stabilized ABS.
Color: White.
100% recyclable.

Installation

Follow Rheia's Installation Guidelines for detailed installation procedures and practices.

Listings

Manufactured with UL94 HB, UV-stabilized engineering thermoplastic.

Warranty

2-year limited warranty.
For warranty information go to www.rheiacomfort.com/contact.

DIMENSIONS

Assembly Dimensions:

Part Number: 10-04-230:
Diameter: 6.0" (150.2 mm), Height: 2.04" (51.8 mm)

Assembly Weight:

Part Number: 10-04-230: 0.23 lbs.



Ceiling Diffuser Small

Assembly Part #: 10-04-260

Installed to Rheia Ceiling Boot Assembly #10-01-160.
No integrated airflow adjustment. Airflow balance is integrated into the Ceiling Boot Assembly: 10-01-220.
Use with a ceiling drywall thickness range of: 1/2" to 5/8"

SPECIFICATIONS

Ceiling diffusers are available in 3" and 6" diameters.
Ceiling Diffuser Small: 3-inch diameter: **10-04-260**.

Intended Use

For installation in ceilings or similar applications. The diffuser mounts to the Rheia Ceiling Boot Assembly (10-01-220) with a bayonet-style attachment, and can be easily removed for service or cleaning. The diffusers are dishwasher safe. When installed the diffusers are not required to be caulk sealed to the drywall.

3-inch diffuser for use in heating dominated climates.

HVAC designer to use their discretion when specifying the diffuser size accounting for home type, size, configuration and applicable climate zone into account.

HVAC designer to use their discretion when specifying the diffuser location taking into account the required room airflow, throw, and interior framing and mechanical layout limitations.

Material

UV-stabilized ABS.
Color: White.
100% recyclable.

Installation

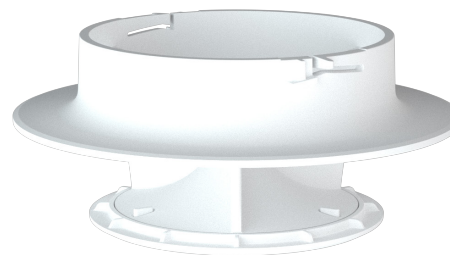
Follow Rheia's Installation Guidelines for detailed installation procedures and practices.

Listings

Manufactured with UL94 HB, UV-stabilized engineering thermoplastic.

Warranty

2-year limited warranty.
For warranty information go to www.rheiacomfort.com/contact.



Ceiling Diffuser Small

DIMENSIONS

Assembly Dimensions:

Part number: 10-04-260:
Diameter: 4.7" (120.0 mm), Height: 2.06" (52.3 mm)

Assembly Weight:

Part number: 10-04-260: 0.14 lbs.

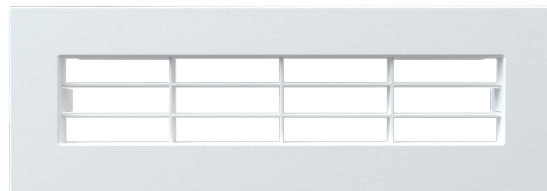


Slotted Diffuser V2

Assembly Part #: 10-04-091

Must be used with Rheia High Sidewall Boot part #10-01-200 or Rheia Pass-through Boot part #10-01-210.

No integrated airflow adjustment. Airflow balance is integrated into boot assemblies: 10-01-200 & 10-01-210. Use with a ceiling drywall thickness range of: 1/2" to 5/8".



Slotted Diffuser V2

SPECIFICATIONS

Diffuser is available in one size with a 1.5" x 9" free opening area.

Intended Use

For installation in walls or similar applications. The diffuser mounts to the Rheia slotted boots with an integrated click-fit attachment, and can be easily removed for service or cleaning. The diffuser is dishwasher safe. When installed the diffuser is not required to be sealed to the drywall.

HVAC designer to use their discretion when specifying the diffuser location taking into account the required room airflow, throw, and interior framing and mechanical layout limitations.

Material

UV-stabilized ABS.
Color: White.
100% recyclable.

Installation

Follow Rheia's Installation Guidelines for detailed installation procedures and practices.

Listings

Manufactured with UL94 HB, UV-stabilized engineering thermoplastic.

Warranty

2-year limited warranty.
For warranty information go to www.rheiacomfort.com/contact

DIMENSIONS

Part Dimensions:

Length: 1.2" (31.6 mm), Width: 9.9" (251 mm), Height: 3.4" (86.1 mm)

Part Weight: 0.15 lbs.



Metal Floor Diffuser 4x10

Part #s: 00-04-300, 00-05-300, 00-06-300

Metal Floor Diffuser 4x10 is available in three color options, the diffuser is equipped without an adjustable damper to ensure proper balancing of the Rheia system.

SPECIFICATIONS

Available in one size to fit standard rough opening of 4" x 10".

Intended Use

For use with Rheia Floor Boot Assembly (10-01-280) only. Do not substitute with a floor diffuser equipped with adjustable baffles as this will significantly compromise airflow balance preventing the system from operating as designed. Not for installation in walls or ceilings.

Attach to the floor boot to wood framing using 3/4" pan head wood screws. Attach floor boot to steel framing using recommended sheet metal screws.

Material

Painted Steel.

Colors:

White: 00-04-300

Beige: 00-05-300

Grey: 00-06-300

100% recyclable.

Installation

Follow Rheia's Installation Guidelines for detailed installation procedures and practices.

Warranty

2-year limited warranty.

For warranty information go to www.rheiacomfort.com/contact.

DIMENSIONS

Part Dimensions:

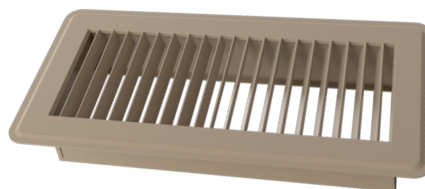
Length: 15.4" (392 mm), Width: 9.9" (13.6 mm),

Height: 3.4" (44.4 mm)

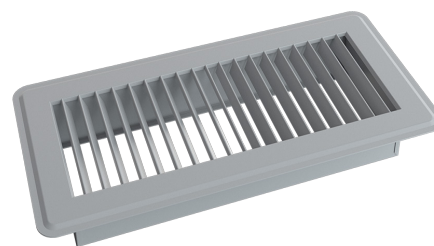
Part Weight: 0.36 lbs.



Metal Floor Diffuser 4x10 White



Metal Floor Diffuser 4x10 Beige



Metal Floor Diffuser 4x10 Grey



Hanger Bar Assembly

Assembly Part #: 00-00-240

Supports the installation of wall and ceiling boots.
Adjustable design allows installation within framed wall cavities, ceiling cavities, and bulkheads with o.c. spacing between 12" and 24".



Hanger Bar Assembly

SPECIFICATIONS

Hanger Bar Assembly is available in one size.

Intended Use

Used with all boot installations where required. Compatible with these assemblies:

- 10-01-200: High Sidewall Boot Assembly
- 10-01-210: Pass Through Boot Assembly
- 10-01-220: Ceiling Boot Assembly

Attach to wood framing using 5/8" pan head wood screws. Attach to steel framing using recommended sheet metal screws.

Material

Galvanized Steel
Color: Natural.
100% recyclable.

Installation

Follow Rheia's Installation Guidelines for detailed installation procedures and practices.

Warranty

2-year limited warranty.
For warranty information go to www.rheiacomfort.com/contact.

DIMENSIONS

Part Dimensions:

Length: 15.4" (392 mm), Width: 9.9" (13.6 mm),
Height: 3.4" (44.4 mm)

Maximum Extension: 26.5" (673.1 mm)

Part Weight: 0.36 lbs.

